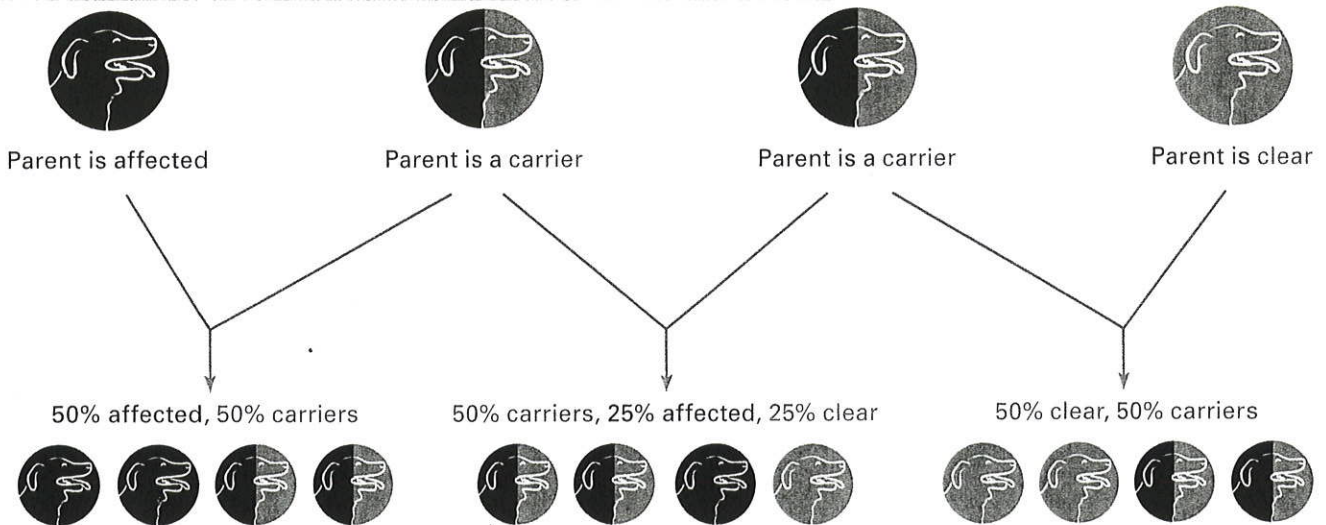


# Breeding Strategies

## Mating Strategies for Dogs Diagnosed as Clear, Affected or Carriers

The relationships shown in this chart represent the **expected** outcomes (ratios) of the possible matings based on Mendelian Inheritance. In some cases the outcomes may vary according to which allele (gene) is inherited. Eg. mating two carriers may produce all clear offspring.



The following three relationships have only one possible outcome (100%).

