



# BMC QLD Newsletter

[bullmastiffclubofqueensland.org.au](http://bullmastiffclubofqueensland.org.au) JULY 2019

## **BMC Qld Specialty Show 2019** **Best in Show**

'We love our Dogs'



**REMYK DEJA BRU**

#### Club Officers

**President**

Darrell Armstrong  
tiararebel@hotmail.com

**Vice President**

Maria Stennings  
stennaroo@gmail.com

**Secretary**

Vicki Owen  
bmcsecqld1@hotmail.com

**Treasurer**

Tahlia Gooding  
bmctreqld@hotmail.com

**Web Monitor**

Vicki Owen  
bmcsecqld1@hotmail.com

**Show Secretary**

Melissa Smith  
E-mail: anmenta@lis.net.au

**Point Score Coordinator**

Andrew Smith  
E-mail: anmenta@lis.net.au

**Newsletter Editor**

Maria Stennings  
stennaroo@gmail.com

#### Committee Members

Trudi McDougall, Brie Bell and  
Cheryl Jenkins

### Contents

<b>Presidents Message</b>	<b>3</b>
<b>Bullmastiff Club Qld Specialty Show Results</b>	<b>4</b>
<b>Bullmastiff Club Qld Specialty Open Show Results</b>	<b>15</b>
<b>Property Results</b>	<b>25</b>
<b>Photo Collage</b>	<b>28</b>
<b>Point Score Results</b>	<b>29</b>
<b>Speciality Show 2020</b>	<b>32</b>
<b>Our Loved Ones On Rainbow Bridge</b>	<b>33</b>
<b>Degenerative Myelopathy</b>	<b>34</b>
<b>Brunfelsia Deadly to Dogs</b>	<b>36</b>
<b>Blast From The Past</b>	<b>37</b>
<b>Meet My Puppy</b>	<b>38</b>
<b>Bullboard</b>	<b>39</b>
<b>Our Nationals and Specialty Show Sponsors</b>	<b>40</b>



### Newsletter Editor

This is my first Newsletter and I hope you all like the content.

If there is anything that you would like to see in the next issue later this year

— please let me know :-

Email :- stennaroo@gmail.com

## PRESIDENT'S MESSAGE:

Hi everyone,

Our annual Champ and Open Shows were recently held at Durack. The conditions were cool and cloudy, but thankfully the rain held off for us. The camaraderie and sportsmanship were commendable and it's great to have interstate exhibitors coming up here to support our shows (thanks to Murray McAllister and also to Carole Moloney). It was nice to see a number of veterans out in the ring again and very exciting to see so many babies out this year.

I would like to thank our judges: Nellie Abela, Michael Yates and Jason Attridge for their time and interest in our breed. The critiques for the Champ Show are now posted on the Club's facebook page. Special thanks are also in order for Vicki Schneider, Trevor Sully and Kevin Zimmerle for their continual service, year in year out, for our shows.

Huge congratulations to our Best in Show winners: Andrew and Melissa Smith in the Champ Show and Craig and Heidi Thomas in the Open Show. Congratulations to all the Class and Property winners, it seems like nobody walked away empty handed this year.

I would finally like to thank our committee for putting on another successful show, particularly Melissa Smith and Vicki Owen for all the hard yards they both put in.

Let's do it all again next year...

Darrell Armstrong

# 13th CHAMPIONSHIP SHOW 08/06/2019

Judge—Ms Nellie Abela (NSW)

## CONFORMATION & GENERAL SPECIALS BMCQLD RESULTS AND CRITIQUE

Thank you very much to the Bullmastiff Club of Queensland for the invitation to judge the Championship Show. What a wonderful day and what a pleasure to have such a lovely lot of dogs and their owners. I feel very special.

The Critiques are my opinion and placing can change on any given day. But, I was very pleased with all the dogs and their temperaments.

The trophies were amazing and my gift very much appreciated.

### **BEST EXHIBIT IN SHOW - REMYK DEJA BRU A & M SMITH**

Red girl 20 months old that caught my eye. Correct breed type with correct head proportions and pigment. Would prefer better mouth. Excellent head to shoulders and correct front and rear. Strong top line standing and kept it on the move. Correct tail set. Moved with reach and drive at the correct speed. Was pleased to award her the Challenge and BIS.





## RUNNER UP TO BEST EXHIBIT IN SHOW

**NEUWERA N BULLFOREST CHIRON M McALLISTER**

18 month old bridle boy. Good breed type and excellent pigment and dark eye for a brindle. Correct ear placement. Strong neck into shoulders with excellent bone. Excellent front and hind quarters and tail set. Good cat feet. Moved well.

Was pleased to award him the Challenge and RUBIS



**RESERVE CHALLENGE DOG**  
**GAMEGUARD VENOM - YOULE/SPARHAM/TURNER**

This young 8 month fawn dog caught my eye as he came into the ring so confidently.  
Correct breed type, correct head proportions and excellent pigment.  
Correct head to shoulders with level top line standing and moving.  
Just hope he makes size.  
Was pleased to give him Reserve Challenge Dog and Puppy In Show.





**RESERVE CHALLENGE BITCH -**  
**CH. CRUSADEABULL NOTHING ELSE MATTERS**  
**C & H THOMAS**

Fawn girl 6.5years old. Correct breed type excellent pigment and correct head proportions. Strong under jaw. Correct front and hind and tail set with correct body proportions. She kept her top line on the move. But, body was somewhat loose—possibly due to age but had a good reach and drive. Well deserved Reserve Challenge Bitch.



## **BABY PUPPY IN SHOW**

### **STENNAROO BAINES ALL ROUNDER - B & M STENNINGS**

Brindle boy of 5.5 months with correct head proportions for one so young. Correct front and hind and good top line.

Was pleased to award him Baby In Show



## **OPPOSITE BABY PUPPY IN SHOW**

### **STENNAROO TOP NOTCH SHOW OFF - B & M STENNINGS**

Brindle girl 5.5 months old. Correct head proportions for one so young. Correct body and level top line. Correct front and rear, bone and tail set.





**PUPPY IN SHOW**

**GAMEGUARD VENUM - YOULE/SPARHAM/TURNER**

Reserve Dog Challenge



**OPPOSITE PUPPY IN SHOW**

**BULLALRYLL OH RUBY - C JENKINS**

Red girl 11 months old. Excellent red colour and pigment. Correct breed type and nice dark eye. Prefer more upper arm and better tail set.



**JUNIOR IN SHOW**

**NEUWERA N BULLFOREST CHIRION - M McALLISTER**

Runner up in Show



**OPPOSITE JUNIOR IN  
SHOW**

**BULLALRYLL WISH AWAY**

C JENKINS

Same as the Puppy Bitch, but has correct neck to shoulders and ear set. Lacked prosternum and prefer better top line.





**INTERMEDIATE IN SHOW**

**REMYK DEJA BRU - A & M SMITH**

Best in Show



**OPPOSITE INTERMEDIATE IN SHOW**

**GRIZZMUFFLEY LOOK AT ME\_- C & H THOMAS**

Fawn dog 2 years old. Correct head proportions and strong neck into shoulders. Little short in upper arm and east west in front. Correct hind quarters and moved okay.



### **ASTRALIAN BRED IN SHOW**

#### **NIGHTQUEST ATLANTIC JEWEL - M & K SWEENEY**

Fawn girl 5.5 years old. Correct body proportions. Just very lean. Good bone and pigment. Level top line and moved well.



### **OPPOSITE AUSTRALIAN BRED**

#### **DUKORY MELLO YELLOW - T McDOUGALL**

Red dog 5 years old. Good breed type, correct head proportions and excellent strong underjaw. Good front and excellent red colour.





**OPEN IN SHOW**

**CH. CRUSADERBULL NOTHING ELSE MATRS - C & H THOMAS**



**OPPOSITE OPEN IN SHOW**

**CH. GAMEGUARD HIT THE LIGHTS - B DALBY**

Fawn dog 3.5 years old. Correct breed type with correct head proportions and good pigment. Prefer more forechest and had low tail set. Body proportions were good as was the bone. Moved okay.



**NEUTER IN SHOW**  
**BANOBRAE BLACK OPS - J BRADLEY**





**BULLMASTIFF CLUB QUEENSLAND**

**15th OPEN SHOW**

**JUDGE**

**MR JASON ATTRIDGE (QLD)**

**BEST IN OPEN SHOW**



**CH. CRUSADEABULL NOTHING ELSE MATRS**

**C & H THOMAS**

**OPPOSITE BEST IN OPEN SHOW**  
**GAMEGUARD HIT THE LIGHTS - B DALBY**





**BEST DOG - CH. GAMEGUARD HIT THE  
LIGHTS**



**RESERVE DOG – GAMEGUARD VENUM**



**BEST BITCH - CH. CRUSADERBULL NOTHING ELSE MATRS**



**RESERVE BITCH - REMYK DEJA BRU**





**BABY PUPPY IN SHOW**  
**GAMEGUARD SCANDAL**



**OPPOSITE BABY**  
**STENNAROO LOCKERBIE LAD**



**PUPPY IN SHOW**  
**GAMEGARD VENUM**



**OPPOSITE PUPPY**  
**BULLALRYLL OH RUBY**





**JUNIOR IN SHOW**  
**BULLALRYL WISH AWAY**



**OPPOSITE JUNIOR**  
**DUNNEIMED TWISELTON**



**INTERMEDIATE IN SHOW**  
**REMYK DEJA BRU**



**OPPOSITE INTERMEDIATE**  
**CH GRIZZMUFFLEY LOOK AT ME**





**AUSTRALIAN BRED IN SHOW**  
**NIGHTQUEST ATLANTIC JEWEL**



**OPPOSITE AUSTRALIAN BRED**  
**CH. BULLAKY BET HE'S GOOD**



**OPEN IN SHOW**  
**CH.CRUSADABULL NOTHING ELSE MATRS**



**OPPOSITE OPEN**  
**CH.GAMEGUARD HIT THE LIGHTS**





**PROPERTY CLASSES**  
**JUDGE MR MICHAEL YATES**



**BABY PUPPY SWEEPSTAKES**  
**STENNAROO AVA GOOD WEEKEND**



**NOVICE SWEEPSTAKES**  
**REMYK DEJA BRU**



**BEST HEAD DOG**  
**BANOBRÆ BLACK OPS**



**BEST HEAD BITCH**  
**BULLALRYL WISH AWAY**



## PROPERTY CLASSES



**BEST MOVEMENT**  
**REMYK DEJA BRU**



**BEST FAWN**  
**CH PARADIGM LUCEA**



**BEST RED**  
**DUKORY MELLOW YELLOW**



**BEST BRINDLE**  
**NEUWERA N BULLFOREST CHIRON**



## PROPERTY CLASSES



**BEST OWNED BRED AND HANDLED  
NEUWERA N BULLFOREST CHIRON**



**BEST PARENT AND PROGENY  
CH GAMEGARD HIT THE LIGHTS**

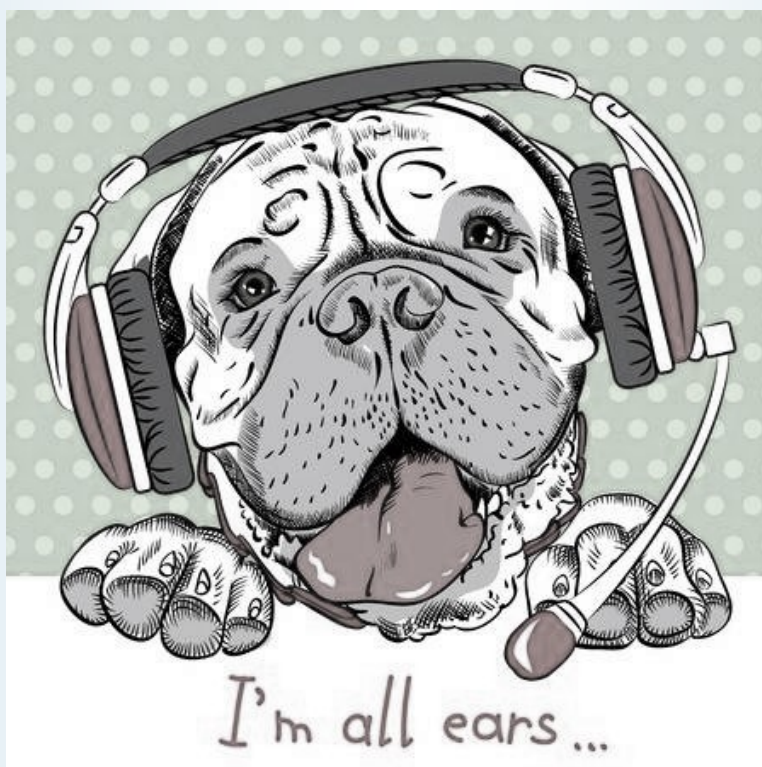






## Pointscore Shows 2019

1. 02/03/19 GUNDOG & HEAVY BREEDS CH
2. 02/03/19 GUNDOG & HEAVY BREEDS OS
3. 20/04/19 BUNDABERG KC CH
4. 20/04/19 BUNDABERG KC CH
5. 05/05/19 WESTERN SUBURBS KC CH
6. 05/05/19 WESTERN SUBURBS KC OS
7. 08/06/19 BMCQ CH
8. 08/06/19 BMCQ OS
9. 27/07/19 LADIES KENNEL ASS CH
10. 27/07/19 LADIES KENNEL ASS CH
11. 03/08/19 HRVEY BAY & DISTRICT CH
12. 18/08/19 GUNDOG & HEAVY BREEDS CH
13. 08/09/19 PINE RIVERS KC CH
14. 06/10/19 BEAUDESERT KC CH



## How the Pointscore System Works in 2019

There are 14 Pointscore shows in 2019 and the top 8 scores for each dog will be tallied to give a final result (a maximum of 3 shows away from Durack can be included). You must remain to exhibit for all classes including CLASS IN GROUP and CLASS IN SHOW. If you choose not to stay you will forfeit your Pointscore points.

### **\*\*\*PLEASE NOTE\*\*\***

In order for your wins to be included in your pointscore tally, you need to be a financial member prior to commencement of the show.

Sashes are awarded for ***Bullmastiff of the Year, Runner-up Bullmastiff of the Year, Opposite Bullmastiff of the Year*** and ***Puppy of the Year***.

### **Puppy of the Year**

Will be the Best Puppy from the combined classes of Baby, Minor and Puppy. The 3 classes will be totalled together for an overall result.

### **Allocation of Points**

Best of Breed	15	Class of Breed	5	Best in Group	4
RU Best of Breed	10	(if competing against opposite)		Reserve Best in Group	3
Challenge	8	1 <sup>st</sup> in Class	4	Class in Group	2
Reserve Challenge	6	2 <sup>nd</sup> in Class	3	Class in Show	3
		3 <sup>rd</sup> in Class	2	Competing	1





# 2019 Pointscore Bullmastiff of the Year

BULLMASTIFF OF THE YEAR				Mar	Mar	Apr	Apr	May	May	Jun	Jun	Jul	Jul
Dog's Name		Owner's Name	TOTAL	OS	CH	CH1	CH2	OS	CH	OS	CH	CH1	CH2
Dabulsha Kentucky Miss	B	D. Ogilvie	16			6	10						
Ch Grizzmuffley Look At Me	D	C & H Thomas	27			15	8				4		
Remyk De Ja Bru	B	A & M Smith	48					17	10	6	15		
Stennaroo Fearless Angel	B	B & M Stennings	34			10	15		3	3	3		
Dunneimed Twiselton	D	T & M Cole	32		10				15	4	3		
Ch Crusadeabull Nothin Else Matrs	B	C & H Thomas	21							15	6		
Bullalryll Ravens Ode	B	C Jenkins	9						3	3	3		
Ch Dukory When Doves Cry	B	T McDougall	11						5	3	3		
Paradigm Who Wants A Drink	D	M Landy	17	17									
Ch Paradigm Hi Jinx	B	B Miller	27	12	15								
Ch Gameguard Hit The Lights	D	B Dalby	14							10	4		
Dukory Mello Yello	D	C Jenkins	7							3	4		
Tiararebel Earl Of Torque	D	D & R Armstrong	2								2		
Tiararebel Alluring Embrace	D	D & R Armstrong	6							3	3		
Dunneimed Never Surrender	B	B Dalby	4							2	2		
PUPPY OF THE YEAR													
Waterlea Stormy Weather At Salieri		Yates/Mills	12					5	7				
Stennaroo Ava Good Weekend	B	B & M Stennings	13			5	5			1	2		
Stennaroo Baines Allrounder	D	B & M Stennings	19			4	4	4		2	5		
Stennaroo Top Notch Show Off	B	B & M Stennings	12			3	3			2	4		
Stennaroo Got Your Attention	B	B & M Stennings	10					3	3	1	3		
Stennaroo Lockerbie Lad	D	B Dalby	6							4	2		
Stennaroo Storm Chaser	D	Moloney/Stennin	6							3	3		
Waterlea It Had To Be You At Stennaroo	B	Stennings/Mills	4							3	1		
Bullalryll Oh Ruby	B	C Jenkins	8							4	4		
Bullalryll Wish Away	B	C Jenkins	14						6	4	4		
Dukory Witchy Woman	B	T McDougall	13	8	5								



***Bullmastiff Club of Queensland  
15<sup>th</sup> Anniversary  
Specialty Championship Show***

***To be held:***

***Saturday 6<sup>th</sup> June 2020***

***Canine Control Grounds, King Avenue, Durack QLD***

***SAVE THE DATE!***

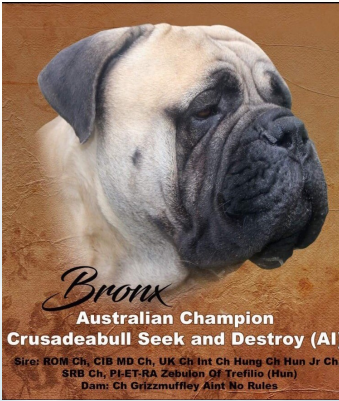
***We will be having a UK Breed Specialist judge  
Resume and more details to follow soon!***

***We hope you can make it!***





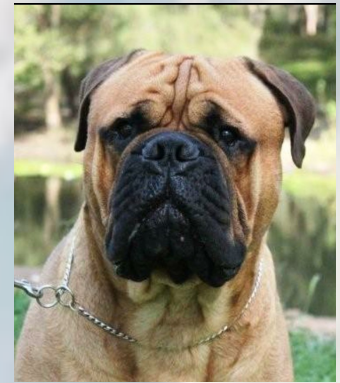
# OUR LOVED ONES ON RAINBOW BRIDGE



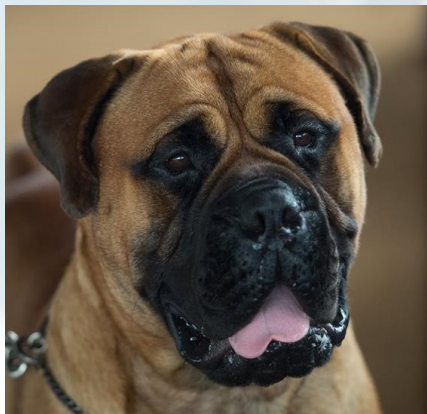
**Bronx**  
Australian Champion  
Crusadeabull Seek and Destroy (AI)  
Sire: ROM Ch, CIB MD Ch, UK Ch Int Ch Hung Ch Hun Jr Ch,  
SRB Ch, PLE-RA Zebulon Of Trefillo (Hun)  
Dam: Ch Grizzmuffley Aint No Rules  
BRONX 18/10/13—  
06/04/19  
CH CRUSADEABULL  
SEEK  
AND DESTROY



HALO 11/05/11—04/02/19  
CH GRIZZMFFLEY AINT  
NO RULES



TROOPER 12/02/10—  
26/08/18  
BIS GR CH  
GRIZZMUFFLEY LIVE FOR  
LOVE



GRYPHON  
13/02/17—15/11/18  
CH STENNAROO  
THUNDA DOWN UNDA



PEBBLES 23/05/16—  
07/01/19  
CH BULLOFGLODY  
BOSTON DREAMING

I thought of you with love today,  
But this is nothing new.  
I thought about you yesterday,  
And the days before that too.

Your memory is my keepsake,  
With which I'll never part,  
The stars have you in their keeping,  
I have you in my heart!

# Degenerative Myelopathy - Disease Basics

WWW.CANINEGENETICSDISEASES.NET

## What is Degenerative Myelopathy?

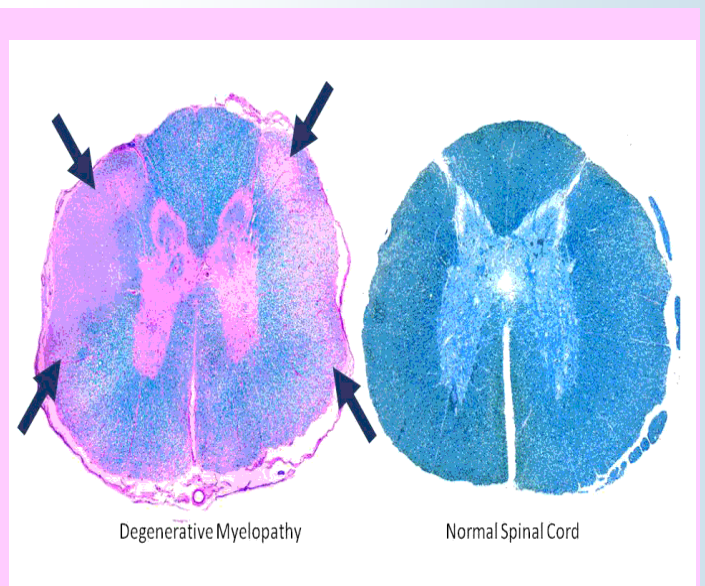
Degenerative myelopathy is a progressive disease of the spinal cord in older dogs. The disease has an insidious onset typically between 8 and 14 years of age. It begins with a loss of coordination (ataxia) in the hind limbs. The affected dog will wobble when walking, knuckle over or drag the feet. This can first occur in one hind limb and then affect the other. As the disease progresses, the limbs become weak and the dog begins to buckle and has difficulty standing. The weakness gets progressively worse until the dog is unable to walk. The clinical course can range from 6 months to 1 year before dogs become paraplegic. If signs progress for a longer period of time, loss of urinary and fecal continence may occur and eventually weakness will develop in the front limbs. Another key feature of DM is that it is not a painful disease.



*Degenerative myelopathy is a devastating disease causing progressive paralysis in a large number of dog breeds. New research has identified a gene that is associated with a major increase in risk of the disease.*

## What causes Degenerative Myelopathy?

Degenerative myelopathy begins with the spinal cord in the thoracic (chest) region. If we look under the microscope at that area of the cord from a dog that has died from DM, we see degeneration of the white matter of the spinal cord. The white matter contains fibers that transmit movement commands from the brain to the limbs and sensory information from the limbs to the brain.



*In the section of a spinal cord from a dog who has died of DM (Left), the degeneration is seen as a loss of the blue color at the edges (arrows) compared with the spinal cord from a normal*

This degeneration consists of both demyelination (stripping away the insulation of these fibers) and axonal loss (loss of the actual fibers), and interferes with the communication between the brain and limbs. Recent research has identified a mutation in a gene that confers a greatly increased risk of developing the disease.

## How is degenerative myelopathy clinically diagnosed?

Degenerative myelopathy is a diagnosis of elimination. We look for other causes of the weakness using diagnostic tests like myelography and MRI. When we have ruled them out, we end up with a presumptive diagnosis of DM. The only way to confirm the diagnosis is to examine the spinal cord under the microscope when a necropsy (autopsy) is performed. There are degenerative changes in the spinal cord characteristic for DM and not typical for some other spinal cord disease.



## **What else can look like degenerative myelopathy?**

Any disease that affects the dog's spinal cord can cause similar signs of loss of coordination and weakness. Since many of these diseases can be treated effectively, it is important to pursue the necessary tests to be sure that the dog doesn't have one of these diseases.

## **How do we treat degenerative myelopathy?**

There are no treatments that have been clearly shown to stop or slow progression of DM. Although there are a number of approaches that have been tried or recommended on the internet, no scientific evidence exists that they work. The outlook for a dog with DM is still grave. The discovery of a gene that identifies dogs at risk for developing degenerative myelopathy could pave the way for therapeutic trials to prevent the disease from developing. Meanwhile, the quality of life of an affected dog can be improved by measures such as good nursing care, physical rehabilitation, pressure sore prevention, monitoring for urinary infections, and ways to increase mobility through use of harnesses and carts.

DEGENERATIVE MYELOPATHY CAN NOW BE SCREENED FOR THROUGH DNA TESTING IN AUSTRALIA.

# Beautiful Brunfelsia plant deadly to dogs



<http://www.dogslife.com.au/dog-news/dog-health/beautiful-brunfelsia-plant-deadly->



Veterinarians are warning dog owners about the dangers lurking in the backyard, with the popular Brunfelsia flower topping the list. Commonly known as Yesterday-Today-Tomorrow (*Brunfelsia bonodora*), this plant is beautiful but deadly.



Dr Fiona Park, Internal Medicine Specialist from the Animal Referral Hospital in Sydney, reported an increased number of Brunfelsia poisoning cases over the past couple of months, which has resulted in the death of one dog this month.

There are also reports of canine deaths across the state.

"Dogs seem to be attracted to the berries and seed pods but all parts of the plant can be considered toxic," she says. "Signs of poisoning include salivation, vomiting, diarrhoea, muscle tremors and seizures, and can last up to several days with or without treatment."

Unfortunately, there is no antidote - just supportive therapy via enemas to remove the plant material from the gut, seizure control, administering fluids and possibly general anaesthesia depending on the severity of the case.

"Because Brunfelsia poisoning can be potentially life-threatening, all exposures need to be taken seriously and treated by a vet immediately," says Dr Park.

Eight-week-old Beagle puppy, Mac, got himself into serious trouble last week when he snacked on the Brunfelsia plant in his backyard. His owners heard a yelp and discovered Mac seizing, and raced him to the Animal Referral Hospital.

Unfortunately, the anti-seizure drugs administered to Mac did not stop the convulsions, so the puppy had to be put under general anaesthetic with a breathing tube for 24 hours. Mac woke up some time later but it took a few more days before he was able to eat and walk, although, still wobbly. The cause of the seizures became apparent when Mac emptied his bowels, revealing the remains of the poisonous plant.

"We don't know how much he would have eaten, but it was quite a large amount based on the amount of plant material in his stool," says Dr Park. "Mac was very lucky he made a full recovery. If he hadn't come so quickly and had continued to seizure, he could have died."

If you have any concerns about your dog being exposed to Brunfelsia or other toxic plants, contact your local vet.





# BLAST FROM THE PAST



**AUS CH BLACKSLATES BOSTON BLEND (IMP USA)**

**DOG D.O.B. 13/08/97**

Am Ch TAURALAN HOLD THAT TIGER (USA)

US Int Span Ch BLACKSLATES BOSTON BLACKIE (USA)

Am Ch Can Ch BLACKSLATES DARLING DELILAH (USA)

Ch. BLACKSLATES HOT SHOT(USA)

Am Ch Can Ch BLACKSLATES BOSTON BRAHMIN (USA)

Am Ch HOUSE OF TUDORS GOLD DIGGER (USA)

Am Ch HOUSE OF TUDORS HOLLY(USA)

Am Ch Can Ch BLACKSLATES BOSTON BRAHMIN (USA)

Am Ch BULLBERRY BLACKSLATE GENE (FIN)

Fin Ch MAXSTOKE BULLBERRY INGA (FIN)

SIMINOLE FOREVER BLACKSLATE (USA)

Am Ch SEM PEDROS TEDDY BEAR (USA)

SIMINOLE DINAH BEAR (USA)

BLACKSLATES STEEL MAGNOLIA (USA)



# Meet My Puppy



If you have a recent litter of puppies and you would like to advertise them and their new family, please send the following details to the editor at [stennaroo@gmail.com](mailto:stennaroo@gmail.com)

- ♥ Puppy's Name (and show name if possible)
- ♥ Date of Birth
- ♥ Sire and Dam
- ♥ New Owners
- ♥ Breeders

This is free to all  
club members







## **Bullboard &** **Advertisements**



If you would like to place an advertisement in the newsletter, or you would like to have a bullboard included in the **newsletter** and on our **website**, email photos, contact details and a small amount of text to **stennaroo@gmail.com** and make payment by either of the following methods:

### **1) Cheque:**

Please send cheque to:

Bullmastiff Club of Qld  
157 Braun Street  
DEAGON QLD 4017

**Or**

### **2) Direct Deposit**

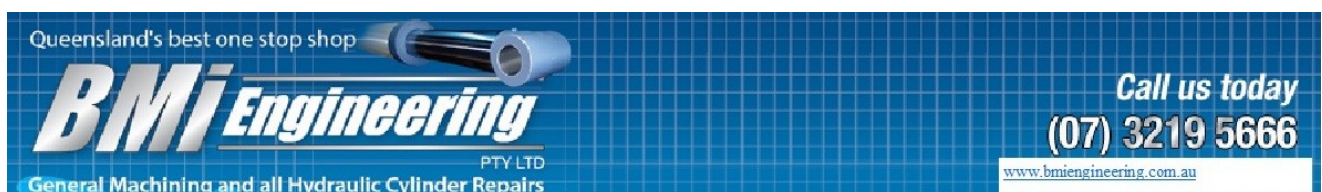
Please e-mail Vicki at **bmctreqlid@hotmail.com** to notify her and make payment to:

Bullmastiff Club of Qld  
BSB 064 405 (Commonwealth)  
ACC # 0092 1957.

(Please use your prefix or surname as reference)







IVORY COAT  
COMPANION GOODS



BREEDING AMAZING FAMILY DOGS



Shallow Well Bullmastiff 0407 451818  
inquiries@shallowwellbullmastiff.com

[www.shallowwellbullmastiff.com](http://www.shallowwellbullmastiff.com)



Nikki Kenwick  
Photography

Marshall Arts Graphics